

Corrigendum

Corrigendum to “Field Equations and Lagrangian for the Kaluza Metric Evaluated with Tensor Algebra Software”

L. L. Williams 

Konfluence Research Institute, 6009 Olympic, Manitou Springs, CO 80829, USA

Correspondence should be addressed to L. L. Williams; lance@konfluence.org

Received 6 August 2018; Accepted 16 August 2018; Published 6 September 2018

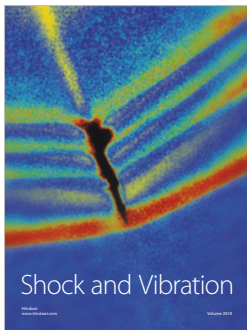
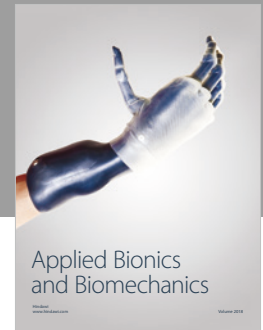
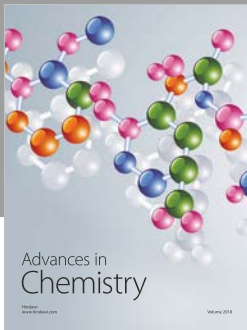
Copyright © 2018 L. L. Williams. This is an open access article distributed under the Creative Commons Attribution License, which permits unrestricted use, distribution, and reproduction in any medium, provided the original work is properly cited.

In the article titled “Field Equations and Lagrangian for the Kaluza Metric Evaluated with Tensor Algebra Software” [1], there was an error in equation (A.7) where the last term should be a minus not a plus.

$$\begin{aligned}\tilde{\Gamma}_{\mu\nu}^{\beta} &= \frac{1}{2}\tilde{g}^{\beta\alpha}(\partial_{\mu}\tilde{g}_{\alpha\nu} + \partial_{\nu}\tilde{g}_{\alpha\mu} - \partial_{\alpha}\tilde{g}_{\mu\nu}) \\ &\quad + \frac{1}{2}\tilde{g}^{\beta 5}(\partial_{\mu}\tilde{g}_{5\nu} + \partial_{\nu}\tilde{g}_{5\mu}) \\ &= \Gamma_{\mu\nu}^{\beta} + \frac{1}{2}g^{\beta\alpha}(A_{\nu}\psi F_{\mu\alpha} + A_{\mu}\psi F_{\nu\alpha} - A_{\mu}A_{\nu}\partial_{\alpha}\psi).\end{aligned}\tag{A.7}$$

References

- [1] L. L. Williams, “Field Equations and Lagrangian for the Kaluza Metric Evaluated with Tensor Algebra Software,” *Journal of Gravity*, vol. 2015, Article ID 901870, 6 pages, 2015.



Hindawi

Submit your manuscripts at
www.hindawi.com

